



SIMPLE LIFE



SIMPLE LIFE



Quarrymans View, Worsley, M28

£1,310 PCM

Welcome to Our Lady's, a stunning development offering a mix of 2, 3 & 4 bedroom homes exclusively for rent.

The Weaver is a beautifully designed, modern 3 bedroom family home. The downstairs offers an open plan kitchen/dining area with a range of contemporary fitted cabinets with integrated appliances. To the rear of the house the living room has a set of French windows which overlook and open onto the back garden, creating a light and spacious environment.

Upstairs there is a generously proportioned master bedroom with fitted, mirrored wardrobes. Additionally there are two further bedrooms to the front of the house as well as a family bathroom, offering great space for young couples and families alike.

Our Lady's development is well located; situated less than 1 mile from the A6, one of the main arterial routes into Manchester city centre. The site is also close to the A580 providing access to the motorway network including the M61, M60 and M62.

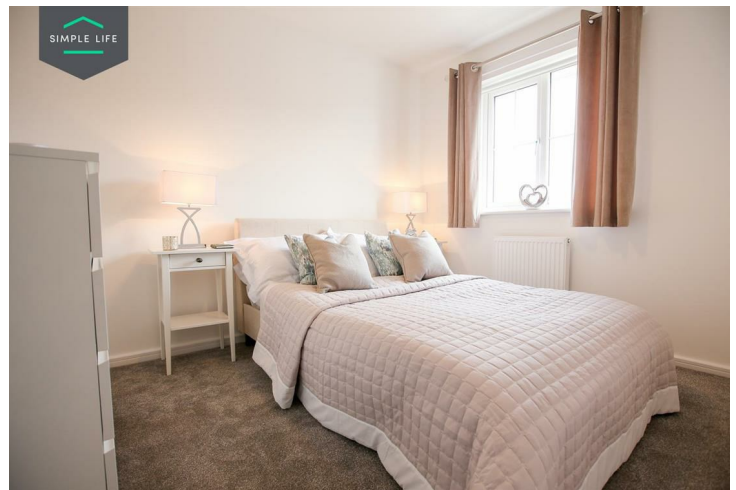
The towns of Worsley, Walkden, Bolton and Swinton are all nearby. The site is also approximately 1 mile away from Walkden train station which provides a regular service into Manchester city centre, with a travel time of just 15 minutes into Manchester Victoria station.

A large number of local primary schools are also located close to the development.

To visit this site, please use postcode M28 0HF in your satnav.

Deposit: £1510
Holding deposit: £300
Unfurnished
Council tax: B
Available 26th January 2026





Key Features

- Private driveway
- Fitted wardrobes to master bedroom
- Fridge freezer
- Oven and hob
- Dark ash style worktops
- Security alarm system
- Dishwasher
- Washing/drying machine
- Light wash wood effect flooring
- Modern, white kitchen units

Location

